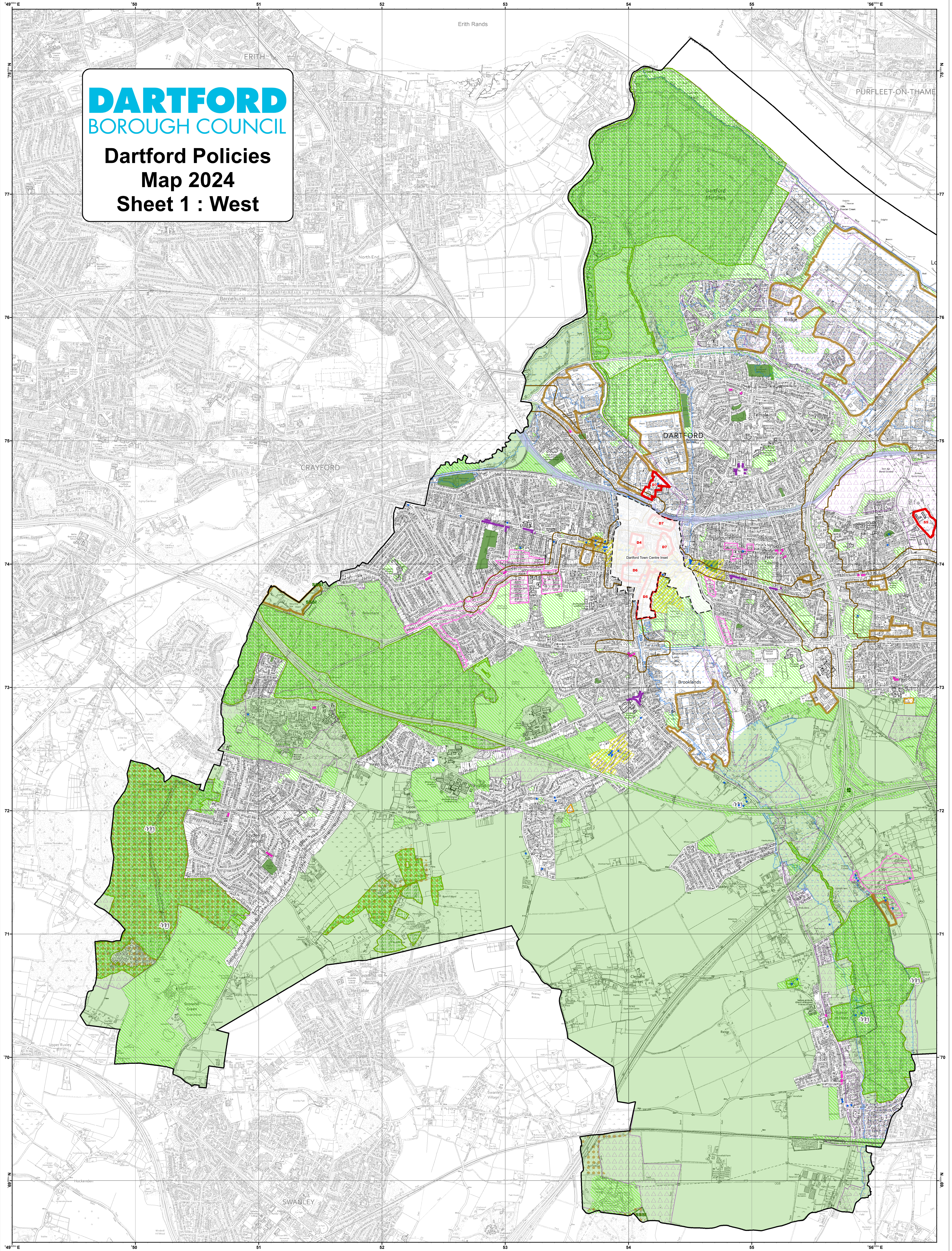


DARTFORD BOROUGH COUNCIL

Dartford Policies Map 2024 Sheet 1 : West



Infrastructure & Centres

- Air Quality Management Areas (M2)
- Dartford Town Centre Boundary (D3, M18, M23, S1)
- Crossrail Safeguarding Area (M15)
- Dartford Town Centre - Core Frontage (D3)
- District Centre (M22)
- Local Centre (M22)

Development Areas

- Bluewater (M21, S1)
- Gypsy and Traveller Allocations (M11)
- Identified Employment Areas (M18, M20, S1)
- Strategic Allocations (S5, D4, D5, D6, D7, E4, E5, M21)

Open Space & Environment

- Borough Open Space (M13)
- Flood Risk Area (M4)
- Green Belt (M12, S1)
- Local Wildlife Sites (M14)
- Marine Conservation Areas (M14)
- Protected Local Green Space (M13)
- Regionally Important Geological/Geomorphological Sites (M14)

Conservation & Heritage

- Ancient Woodland (M14)
- Area of Special Character (M1)
- Biodiversity Opportunity Area (M14)
- Conservation Area (M5)
- Listed Building (M5)
- Scheduled Monument (M5)
- Sites of Special Scientific Interest (SSSI) (M14)

The following policies apply:

- Borough Wide (Strategic): S2, S3, S4
- Borough Wide (Development Management): M3, M6, M7, M8, M9, M10, M16, M17, M19
- In Central Dartford: D1, D2, D3
- In Ebbsfleet & Swanscombe: E1, E2, E3, E6

Map Scale 1:10,000
Contains Ordnance Survey data © Crown copyright and database rights.
Dartford Borough Council AC0000809511 2024