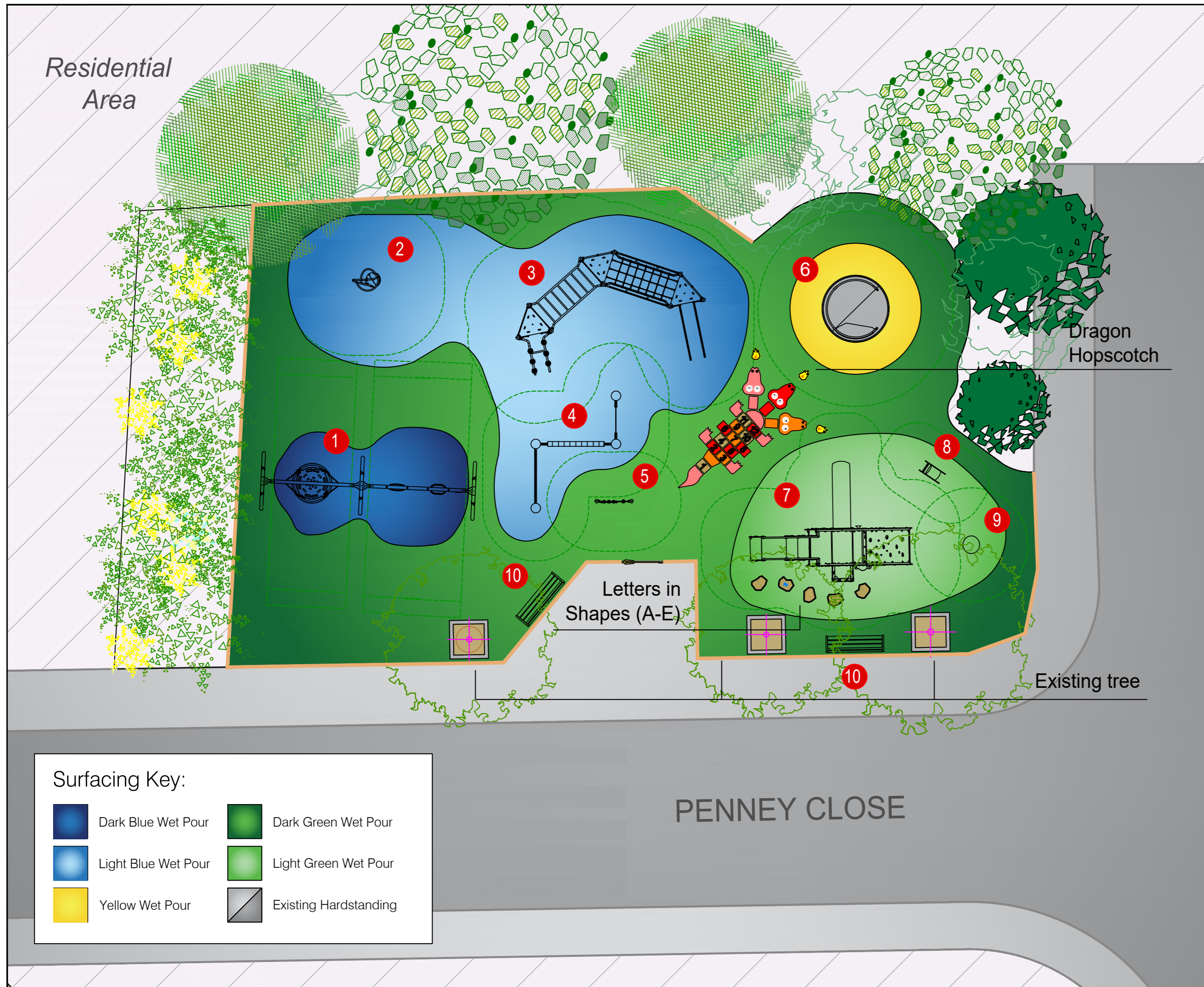
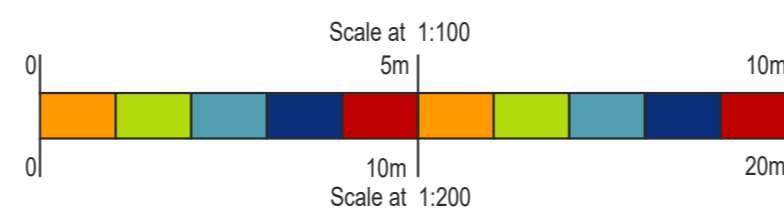


Penney Close

Dartford Borough Council



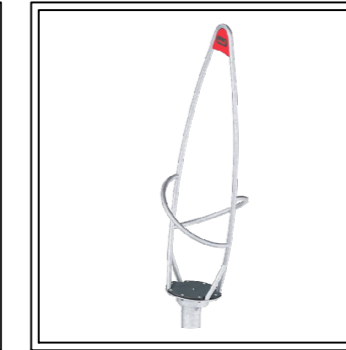
- Site notes:
- All new play equipment and furniture to create a fun, inclusive & accessible play area.
 - New wet pour design overlaying existing surfacing. Surface to meet edge of existing raised wall, with chase cut edge in all other areas.
 - New precast graphics installed within new surfacing: Dragon Hopscotch & Letters in Shapes (A-E).
 - Existing equipment, benches & swing barriers to be removed & disposed of.



New Equipment:



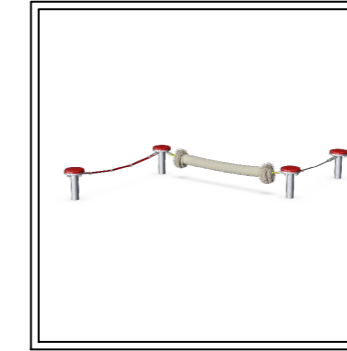
Label: 1
Product Number:
KSW924 - 20329598
Product Name:
Two Bay Swing



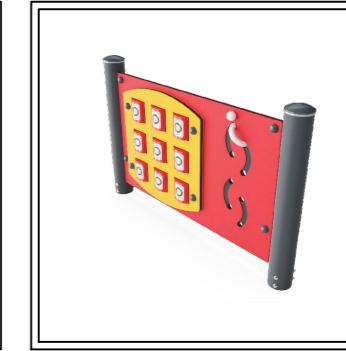
Label: 2
Product Number:
GXY970032-XX17
Product Name:
ROCKET_ROLLER



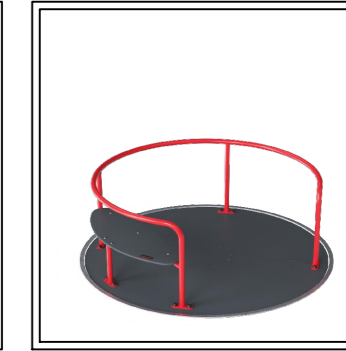
Label: 3
Product Number:
PCM311421 - 20332449
Product Name:
Triple Action Tower



Label: 4
Product Number:
KPL804-XX01
Product Name:
BALANCE_ROPE



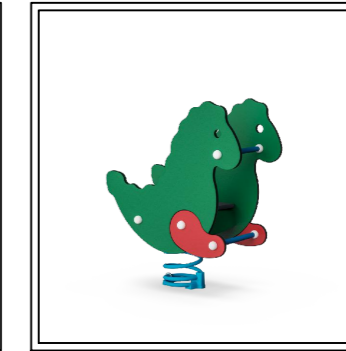
Label: 5
Product Number:
PCM00072 - 20329600
Product Name:
Noughts & Crosses Panel



Label: 6
Product Number:
PCM157-xx01
Product Name:
Wheelchair Carousel



Label: 7
Product Number:
MSC641600-xx17P
Product Name:
Palace & Fortress



Label: 8
Product Number:
M11315-xxP
Product Name:
Crazy Dragon



Label: 9
Product Number:
ELE400024-xx17E
Product Name:
Spinner Bowl



Label: 10
Product Number:
PAR4051-xx11
Product Name:
Agora Bench with Backrest (x2)



KOMPAN!
Let's play

KOMPAN Ltd.
Serenity House
Furzton Lake
Milton Keynes
MK4 1GA
www.KOMPAN.co.uk
T:01908 201002
F:01908 201007
E:KOMPAN.UK@KOMPAN.com

©copyright of this drawing remains the property of KOMPAN Ltd. and the KOMPAN group. This drawing may not be reproduced without prior permission of KOMPAN Ltd. Any infringement will be pursued.

Design assumes the site will be levelled by other (max. gradient 1:100), free draining and with good access.
Quotation and design is submitted site unseen, we reserve the right, following a full site survey to amend the design appropriately.

Areas and dimensions shown are critical for compliance with European safety standards En1176 & En1177. If in doubt ask.

Grass areas should be well established prior to grass mat safety surfacing being laid.

Project & Title Penney Close		Designed by CO	
Client Dartford Borough Council	Date 19/12/2024	Scale 1:100@A2	
Drawing No. CAS-361826-W4N5C8	Sheet	Revision	