

ITEMS LIST

- Play Equipment**
- 1. Diabolo Multiplay Unit Ref: J38124A-C
 - 2. EuroTramp Trampoline 1.5m x 1.5m (jumping area 1m x 1m)* Ref: R34-ETP-000A
 - 3. Metal Combination Swing: 1x inclusive, 1x Cradle, 2x Flat, 1x Pod (2.5m high frame) Ref: UKJ493-UK2024-60
 - 4. Inclusive WOK Roundabout Ref: J2406A
 - 5. Kanope Monkey Bars Ref: Z22-0014
 - 6. Metal Seesaw** Ref: UKJGP23-136 J4920SP
 - 7. Face to Face Springer Ref: J858A
 - 8. Kanope Playhouse Ref: J220A
 - 9. Balance Tube Ref: J111A
 - 10. Little Steps Ref: J12A
 - 11. Curvy Path Ref: J13A
 - 12. Fahr Woodland Accessories Screw on Accessory Set (Fence Mounted) 21 Items Total*** Ref: UKFISOWOOD
 - 13. Fahr Tile Slide Frog Play Panel (800x595mm) including 2No. posts Ref: UKFITSFROGS
 - 14. Fahr Sensory Play Panel (800x595mm) including 2No. Posts Ref: UKFISENP6
 - 15. Fahr Playground Communication Play Panel (800x595mm) including 2No. Posts Ref: UKFIPLOC6
- * Including Ground Buffer Ref: GM3702
 ** Supply & Install Drainage to help reduce standing water under Trampoline
 *** Positioned around the play area attached to existing fence high and low randomly

- Existing Ancillaries**
- 16. 2x Relocated Metal Benches
- Ground Games & Line Markings**
 Supply & Lay Bespoke Thermographic Markings including the following:
- Large Blue River Through Site With Stepping Stones
 - Leaf Hopscotch
 - 6 x Leaves

- Safety Surfacing**
 Area to be surfaced with 284mm Wetpour.
 Critical fall heights as follows:
- 164m² @ 1.2m or less
 - 12m² @ 1.37m
 - 47m² @ 1.4m
 - 21m² @ 1.55m
 - 40m² @ 2.1m

- Colour breakdown as follows:**
- 233m² Standard Black Wetpour
 - 24m² Standard Green Wetpour
 - 13m² Light Green Wetpour
 - 12m² Brown Wetpour
 - 2m² Eggshell/ Beige Wetpour

- Groundworks**
 Safety surfacing and installation requires groundworks these include the following:
- 35m² Excavation into GRASS up to 200mm deep (spoil off site)
 - 35m² Supply & Lay MOT Type 1 Stone 100mm Deepbulk bag
 - 74LM Supply & Install Chase Cut Edging into Existing Tarmac / Handstanding inc. clean of equipment if affected by dust
 - 45LM Supply & Install Chase Cut Edging into Grass inc. backfill & re-installment with seed / re-use existing turf
 - 10m² Supply & Lay Concrete 75mm Deep to reinstate where swing barriers have been removed

- Removals**
- Removal of existing equipment including the following: 2 x 2 seat swing, springer, 2 tower MPU, 3 tower MPU, 24LM of swing barrier fencing and 2 x bench for relocation on site

- Miscellaneous**
- Hand Dig - Additional time required for installation into tarmac / concrete / compacted subbase
 - Drilling existing bases & tarmac to improve drainage where new wetpour is to be installed
 - Pressure Wash up to 100m² (including sweeping)
 - Supply & Install Drainage to help reduce standing water under Trampoline
 - Preliminaries included
 - Post Installation Inspection included

- Added Value**
- Added Social Value Donation to DRIPS (Darent River Preservation Society) FREE OF CHARGE Value £250
 - Added Value Post Installation Inspection FREE OF CHARGE Value £500
 - Added Value Environmental Creation of Wildflower Sensory Area - FREE OF CHARGE Value £175.5
 - Added Value Carbon Offset to reduce environmental impact FREE OF CHARGE Value £113.1

- Optional Extras**
- Optional Extra Clearing of Rubbish Behind Wire Fence Around Site
 - Optional Extra Cutting back overgrown tree & bush encroaching on play area

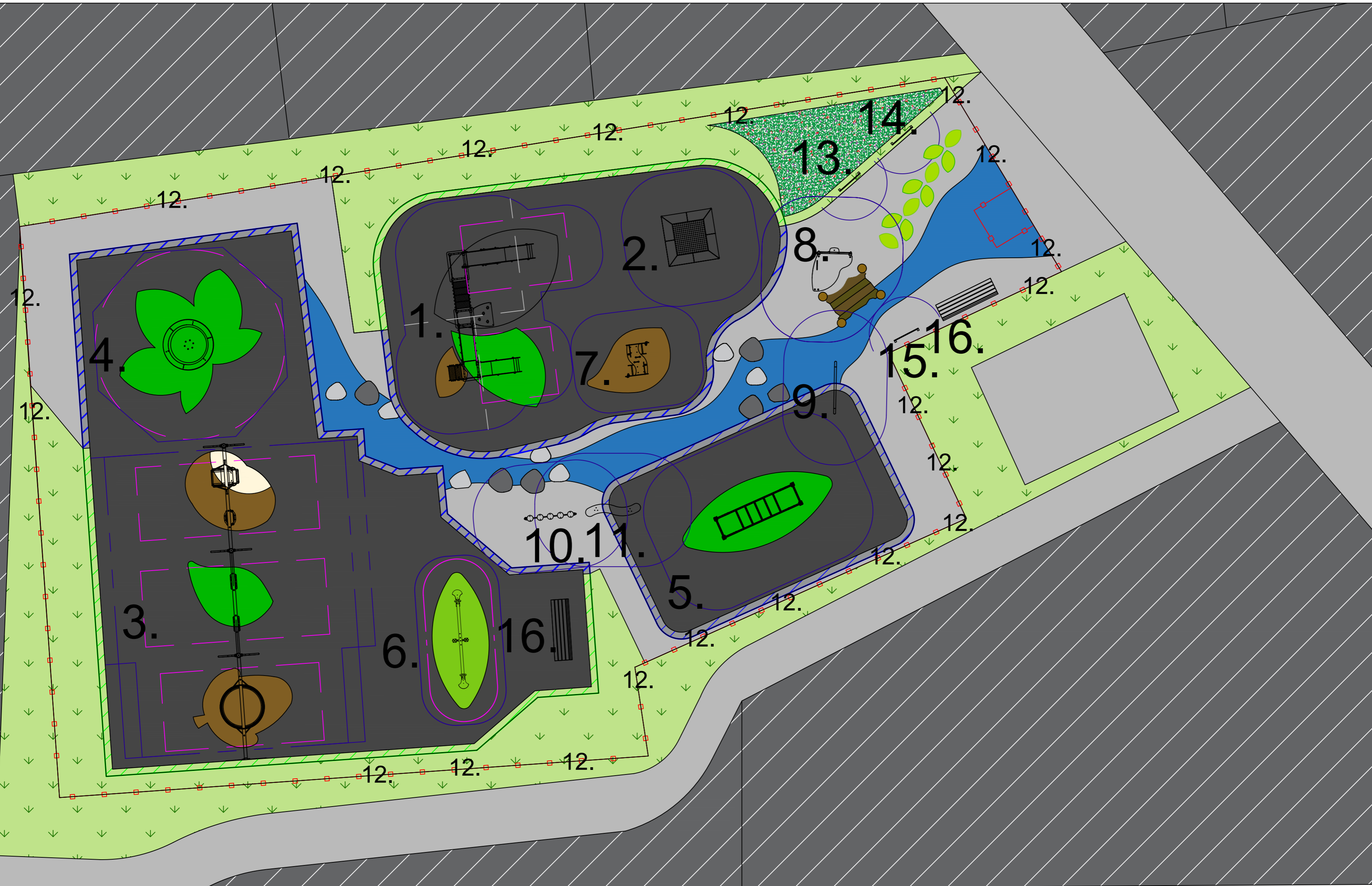
Drainage for underneath the R34-ETP-000A Trampoline has been included, this is to reduce the amount of standing water but does not ensure that standing water will not occur.

Edging for Wetpour/Rubber Mulch surfacing has been costed for as if the proposed pathway edges will be in situ upon Proludic's arrival on site. If this is not the case, additional costs will incur.

Wetpour guarantees are only valid when laid onto appropriate subbase with pre-cast concrete edging (PCC) to the manufacturer's specification. Wetpour guarantees will not be applicable when wetpour is laid onto any existing surface this includes (but not limited to) existing wetpour, paving slabs, tarmac & concrete.

Preliminaries have been included within your quotation, these equate to site setup, safety fencing, safety signage, welfare, offloading of equipment, storage & waste removal.

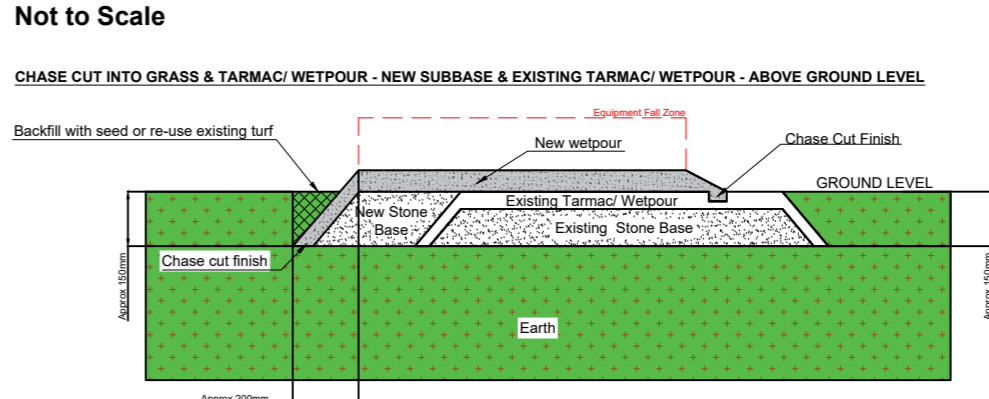
All pathways, furniture, planting, mounding and any other soft landscaping works not mentioned above are to be done by others. Some images shown are for illustrative purposes only. The quote and items list will show the exact equipment used.



PRODUCT KEY

	Grass		Tarmac (Existing)		Wildflower Planting		Wetpour Black
	Wetpour Wearpads		Thermographic Markings		Residential Properties (Existing)		Chase Cut Into Tarmac
	Fencing (Existing)		Free Space		Free Fall		Chase Cut Into Grass

SURFACING DETAIL



Willow Road Play Area - Dartford

Dartford Borough Council

DATE: 20/09/2024 REF: 2409.44699(WillowRoadPlayArea-Dartford)
 REV: - DB: KS CB: AL SCALE: NTS @ A2

