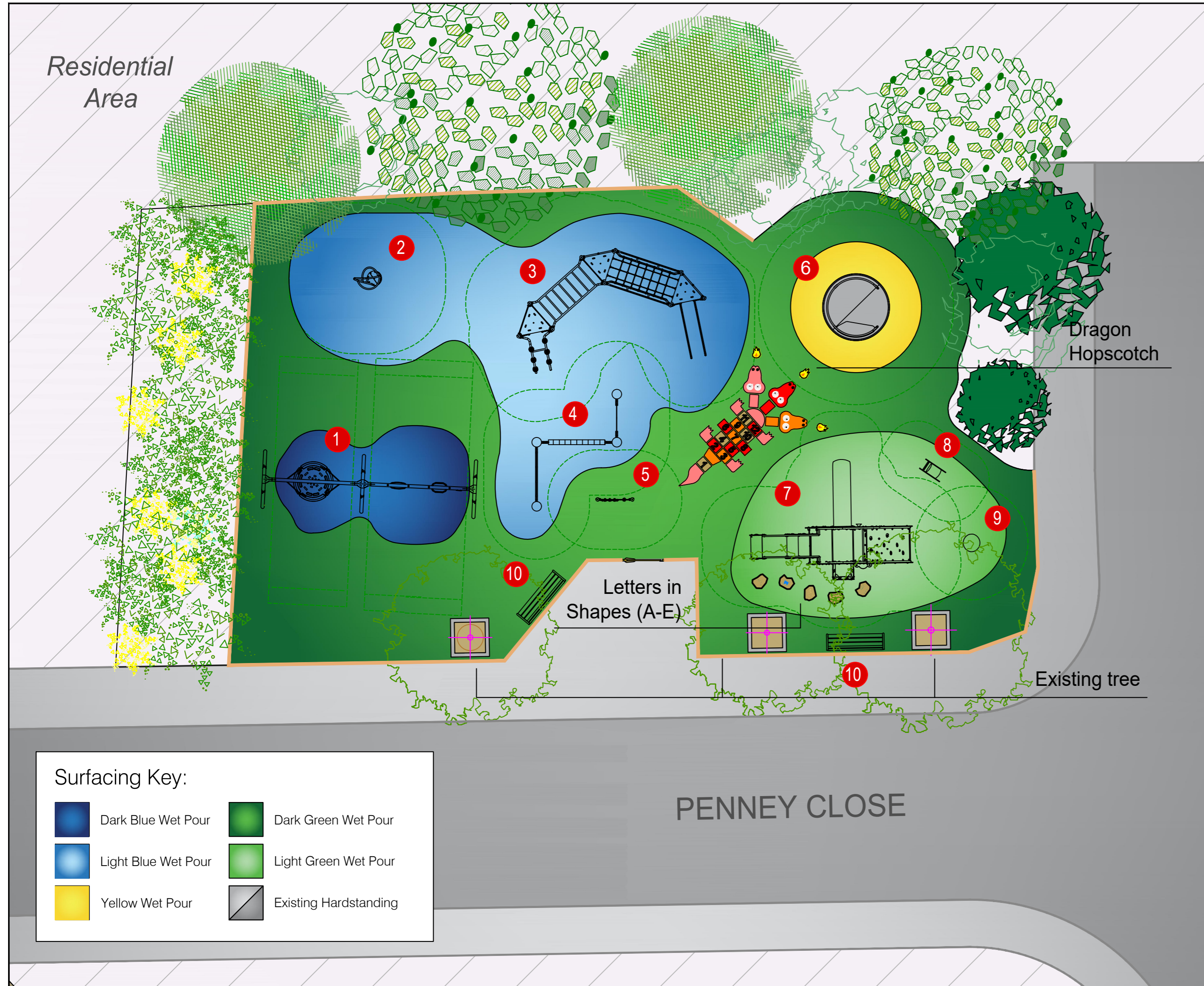


Penney Close

Dartford Borough Council

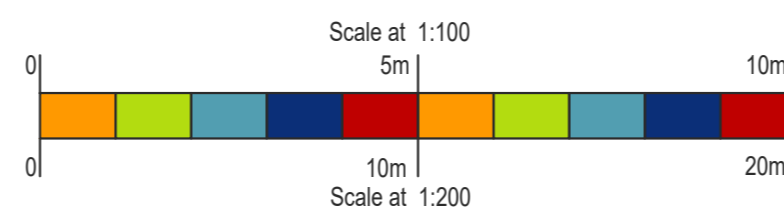


Surfacing Key:

	Dark Blue Wet Pour		Dark Green Wet Pour
	Light Blue Wet Pour		Light Green Wet Pour
	Yellow Wet Pour		Existing Hardstanding

Site notes:

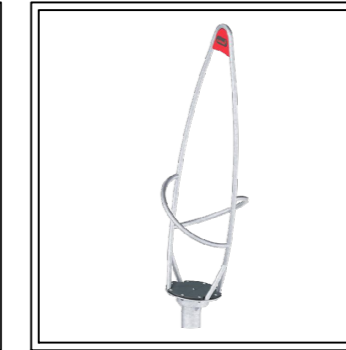
- All new play equipment and furniture to create a fun, inclusive & accessible play area.
- New wet pour design overlaying existing surfacing. Surface to meet edge of existing raised wall, with chase cut edge in all other areas.
- New precast graphics installed within new surfacing: Dragon Hopscotch & Letters in Shapes (A-E).
- Existing equipment, benches & swing barriers to be removed & disposed of.



New Equipment:



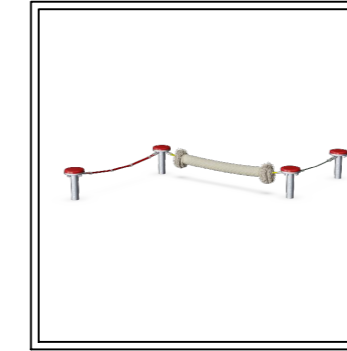
Label: 1
 Product Number: KSW924 - 20329598
 Product Name: Two Bay Swing



Label: 2
 Product Number: GXY970032-XX17
 Product Name: ROCKET_ROLLER



Label: 3
 Product Number: PCM311421 - 20332449
 Product Name: Triple Action Tower



Label: 4
 Product Number: KPL804-XX01
 Product Name: BALANCE_ROPE



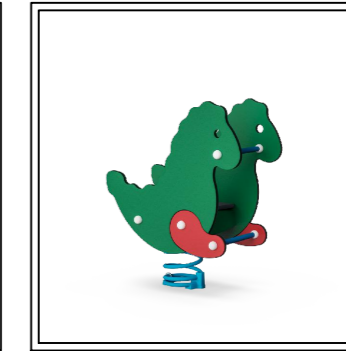
Label: 5
 Product Number: PCM00072 - 20329600
 Product Name: Noughts & Crosses Panel



Label: 6
 Product Number: PCM157-xx01
 Product Name: Wheelchair Carousel



Label: 7
 Product Number: MSC641600-xx17P
 Product Name: Palace & Fortress



Label: 8
 Product Number: M11315-xxP
 Product Name: Crazy Dragon



Label: 9
 Product Number: ELE400024-xx17E
 Product Name: Spinner Bowl



Label: 10
 Product Number: PAR4051-xx11
 Product Name: Agora Bench with Backrest (x2)



KOMPAN Ltd.
 Serenity House
 Furzton Lake
 Milton Keynes
 MK4 1GA
 www.KOMPAN.co.uk
 T:01908 201002
 F:01908 201007
 E:KOMPAN.UK@KOMPAN.com

©copyright of this drawing remains the property of KOMPAN Ltd. and the KOMPAN group. This drawing may not be reproduced without prior permission of KOMPAN Ltd. Any infringement will be pursued.

Design assumes the site will be levelled by other (max. gradient 1:100), free draining and with good access.
 Quotation and design is submitted site unseen, we reserve the right, following a full site survey to amend the design appropriately.

Areas and dimensions shown are critical for compliance with European safety standards En1176 & En1177. If in doubt ask.

Grass areas should be well established prior to grass mat safety surfacing being laid.

Project & Title Penney Close		Designed by CO	
Client Dartford Borough Council		Date 19/12/2024	Scale 1:100@A2
Drawing No. CAS-361826-W4N5C8		Sheet	Revision